

SAMPLE ASSEMBLY DRAWINGS

ASSEMBLY DRAWINGS FOR A 12'W X 8'H EAVE X 24'L KELLY KLOSURE FLAT-ROOF BUILDING

K.K. ORDER #:

P.O. #:

1) BUILDING STRUCTURE

A) BUILDING STRUCTURAL DESIGN CRITERIA

- | | | |
|----|---------------------|---|
| a) | BUILDING CODE: | 2009 IBC |
| b) | ROOF LOAD: | 20 PSF (GROUND SNOW LOAD) |
| c) | SNOW DRIFT LOAD: | N/A (INTERIOR USE ONLY) |
| d) | WIND LOAD: | N/A (MIN. 5 PSF LATERAL LOAD CAPACITY INCLUDED) |
| e) | SEISMIC: | DESIGN CATEGORY "B", SOIL SITE CLASS "D" |
| f) | OCCUPANCY CATEGORY: | II |

- B) THIS BUILDING HAS BEEN DESIGNED IN ACCORDANCE WITH THE BUILDING CODE AND BASIC STRUCTURAL DESIGN DATA LISTED ABOVE. THE BUILDING HAS BEEN DESIGNED AND ENGINEERED FROM A STRUCTURAL ASPECT ONLY. OTHER CODE COMPLIANCE ISSUES SUCH AS ENERGY EFFICIENCY, OCCUPANCY, EGRESS, HVAC, ELECTRICAL, MECHANICAL, FIRE SAFETY ETC. IS THE RESPONSIBILITY OF THE END USER OR ITS REPRESENTATIVES. MATERIAL SPECIFICATIONS ARE AVAILABLE UPON REQUEST.

IMPORTANT NOTES

PLEASE READ BEFORE BEGINNING ASSEMBLY OF BUILDING

WARRANTY WILL BE VOIDED IF THESE PROCEDURES ARE NOT FOLLOWED

Technical Support & Service

A Kelly Klosure Service Representative is just a phone call away.

Please feel free to call with any questions, suggestions or issues as they arise!

Please call 1-800-228-7230 and ask for Service during normal business hours.

If calling after hours, please leave a voice mail in the general mailbox.

Please include the Kelly Klosure Order Number shown to the left on this page when calling for service.

Damage & Shipping Shortages

Any damage or shipping shortages should be reported to Kelly Klosure within 15 days of delivery. Kelly will expedite replacement material. However, Kelly is not liable for replacement material purchased locally without prior approval.

Back Charges

Kelly Klosure must give prior approval of any work relating to shortages or errors in manufacturing. If prior approval is not given, back charges will be denied.

Exterior Fasteners

Due to vibration during the shipping process, some screws that hold the exterior steel sheeting to the panel frame may have been loosened. The building erector is to check and tighten all of the screws prior to building assembly. The screws are considered tight when the rubber washer is in complete contact with the sheeting and is not loose to the touch.

Bolt Installation

All bolts shall be "Snug Tight". A "Snug Tight" condition is the tightness that is attained with a few impacts of an impact wrench or the full effort of a crew member using an ordinary spud wrench to bring the connected plies into firm contact. Per ASTM A325, sufficient thread engagement is having the end of the bolt extending beyond or at least flush with the outer face of the nut.

Building Penetrations

Every effort was made by Kelly during the approval process to factory frame any required wall or roof penetrations, or otherwise ensure that framing will not be interfered with for field cut penetrations. Prior approval and instructions for modification must be obtained from Kelly before cutting or modifying any structural steel framework, otherwise the warranty will be void.

Manufacturer's Disclaimer

The manufacturer has designed and engineered this system. Variations and/or modifications to the system or components will void and nullify any and all warranties, both written and/or implied, and liability for defects in the system and its components. Manufacturer further accepts no responsibility and/or liability for obtaining or maintaining local, regional or national building permits, inspections or documents that may be required.

Lightning Protection Disclaimer

Kelly Klosure Systems roof & wall panels are manufactured from Galvalume® coated steel. To prevent galvanic corrosion, the roof and wall panels must not come into contact with, or water runoff from, copper, lead or copper bearing brasses. For lightning protection, aluminum conductors and aluminum or stainless steel clamps and fixtures are compatible with Galvalume® coated steel.

DRAWING INDEX

PAGE #	PANEL & PANEL RACK HANDLING TIPS
2	ELEVATIONS
3	MATERIAL LISTS
4	BUILDING LAYFLAT
5	FOUNDATION PREPARATION PLAN VIEW
6	BASE SECTIONS
7	DOOR INSTALLATION INSTRUCTIONS
8	PLAN VIEW & DETAILS
9	TYPICAL CROSS-SECTION

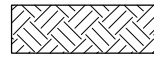


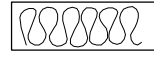
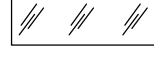
SUPPLEMENT SHEETS

SS-1	OPTIONAL PANEL LIFTING ISOMETRIC
SS-2	EAVE FLASHING INSTALLATION AT BUILDING CORNER
SS-3	FLAT-ROOF ASSEMBLY SEQUENCE

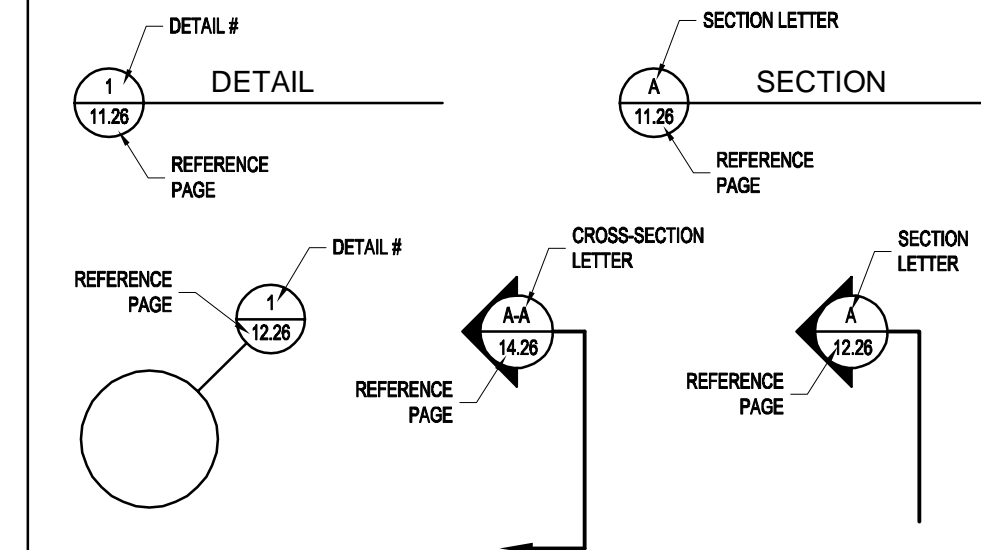
TOOL LIST

Qty.	Description
1	TIN SNIPS
4	SPUD WRENCH (1/4" - 3/4" TAPER W/ CRESCENT WRENCH)
2	1/2" DRIVE RATCHETS
2	9/16" SOCKETS
2	ELECTRIC IMPACT WRENCH (1/2" DRIVE)
1	ROTARY HAMMER DRILL (MINIMUM 6 AMP, SDS STYLE)
1	3/8" SDS MASONRY DRILL BIT (MINIMUM LENGTH 6")
1	SLEDGE HAMMER
1	3 LB HAMMER
2	C-CLAMP VISE GRIPS
2	C-CLAMP W/ 4"-6" OPENING
1	TAG LINE ROPE (75'-0" LONG)
1	PHILLIPS SCREWDRIVER
1	STANDARD SCREWDRIVER
1	P3 PHILLIPS SCREWDRIVER (FOR DOOR HINGE ADJUSTMENT)
1	ELECTRIC DRILL
1	7/16" STEEL DRILL BIT
1	9/16" STEEL DRILL BIT
1	CUTTING OIL
2	9/16" WRENCHES
2	5/16" NUT DRIVERS
2	3/8" NUT DRIVERS
1	100'-0" LONG TAPE MEASURE
1	CHALK LINE
2	STEP LADDERS
1	CAULKING GUN
1	FORK LIFT (TELE-HANDLER)
2	LARGE CROWBARS
<u>OPTIONAL EQUIPMENT</u>	
1	SCISSOR LIFT
1	ARTICULATING BOOM LIFT
2	SCAFFOLDING OR STAGING (ROLLING)
2	3/8" EYEBOLT (FOR LIFTING PANELS)

ARCHITECTURAL LEGEND

	EARTH
	CONCRETE
	RIGID INSULATION
	BATT INSULATION
	GLASS / PLEXIGLASS (ELEVATION)

REFERENCES



PANEL & PANEL RACK HANDLING TIPS



UNLOADING & LIFTING PANEL RACKS WITH A FORKLIFT

UPPER RACKS SHOULD BE REMOVED FROM THE TRUCK FIRST & PLACED AROUND THE WORKING AREA.



STORING PANEL RACKS IN STACKED POSITIONS

WHEN PANEL RACKS ARE STORED IN A STACKED POSITION (ONE ON TOP OF THE OTHER) ON SITE. THE FEET OF THE UPPER RACK MUST NEST INTO THE UPPER END OF THE BOTTOM RACK FRAMING (AS SHOWN). THIS KEEPS RACKS SPACED, MAINTAINING A PROTECTION ZONE FOR THE SHEETING OVERLAPS.

SHEETING OVERLAPS

UPPER RACK FOOT

PROTECTED ZONE

BOTTOM RACK FRAME

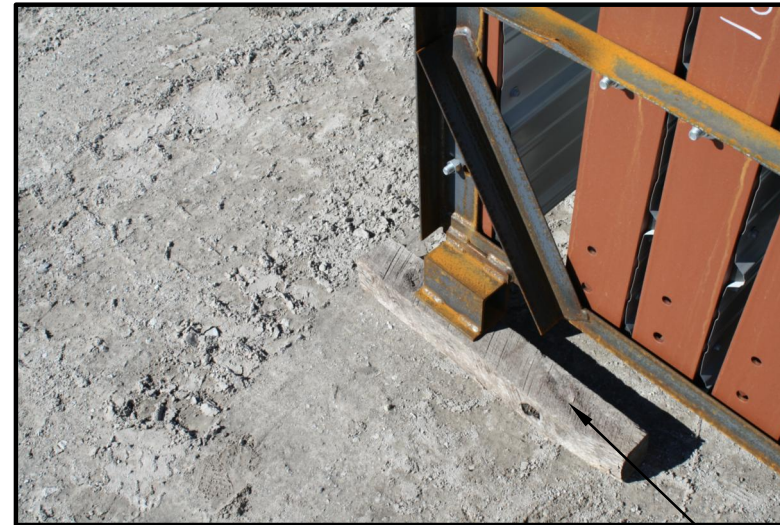


FORKLIFT FORKS

SHEETING OVERLAPS

SEPARATING PANEL RACKS

WHEN LIFTING RACKS ONE OFF THE OTHER WITH A FORKLIFT. SPECIAL CARE MUST BE TAKEN TO PREVENT THE FORKS OF THE FORKLIFT FROM DAMAGING THE SHEETING OVERLAPS THAT PROTRUDE ABOVE THE BOTTOM PANEL RACKS. THIS MATERIAL IS MORE SUSCEPTIBLE TO DAMAGE THEN THE PANEL FRAMES.

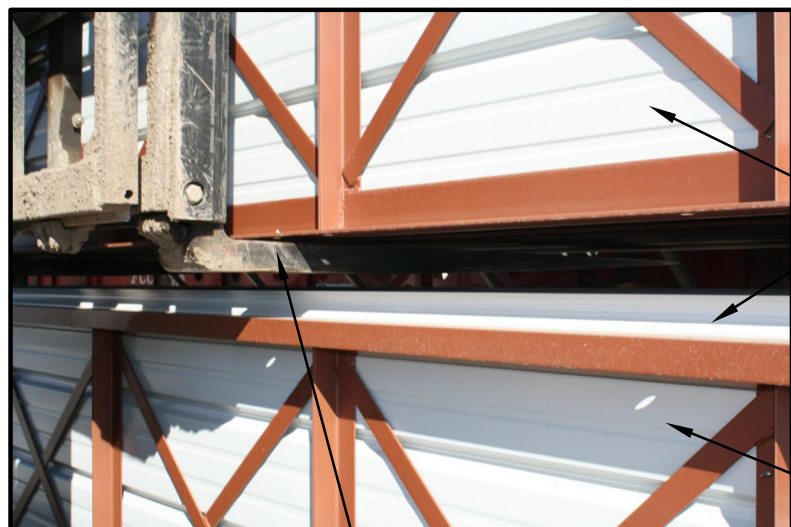


REMOVING PANELS FROM RACKS

WHEN PANEL RACKS ARE REMOVED FROM THE TRUCK AND PLACED AROUND THE STAGING AREA. THE FRONT TWO CORNERS OF EACH RACK SHOULD BE BLOCKED UP. THIS PREVENTS PANELS FROM TIPPING OUT AS PANELS ARE REMOVED. IF THIS IS NOT DONE THEN THERE IS THE POTENTIAL FOR PANEL DAMAGE.

LIFTING PANEL RACKS WITH SLINGS

AN OPTIONAL METHOD OF UNLOADING PANELS IS SHOWN IN THIS ILLUSTRATION. USING SLINGS HUNG FROM A CRANE OR CHERRY PICKER INSTEAD OF A FORKLIFT TO UNLOAD PANEL RACKS FROM THE TRUCK.



FORKLIFT FORKS

TOP RACK

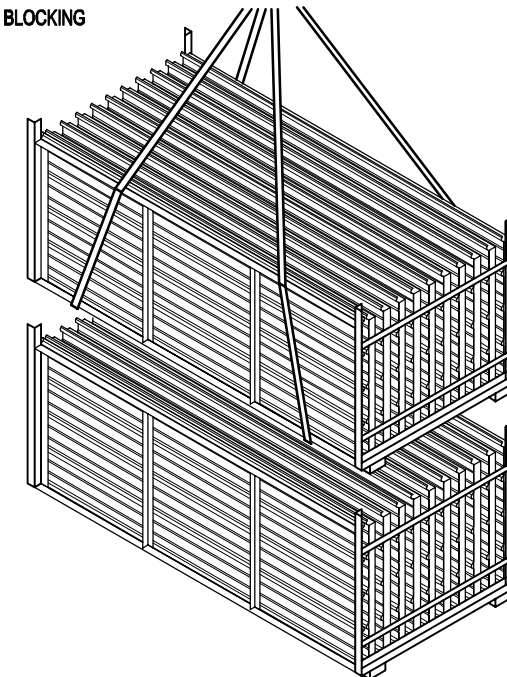
SHEETING OVERLAPS (CAUTION!)

BOTTOM RACK

REMOVE PANELS STARTING WITH THIS SIDE OF THE RACK (PANEL FRAME SIDE)



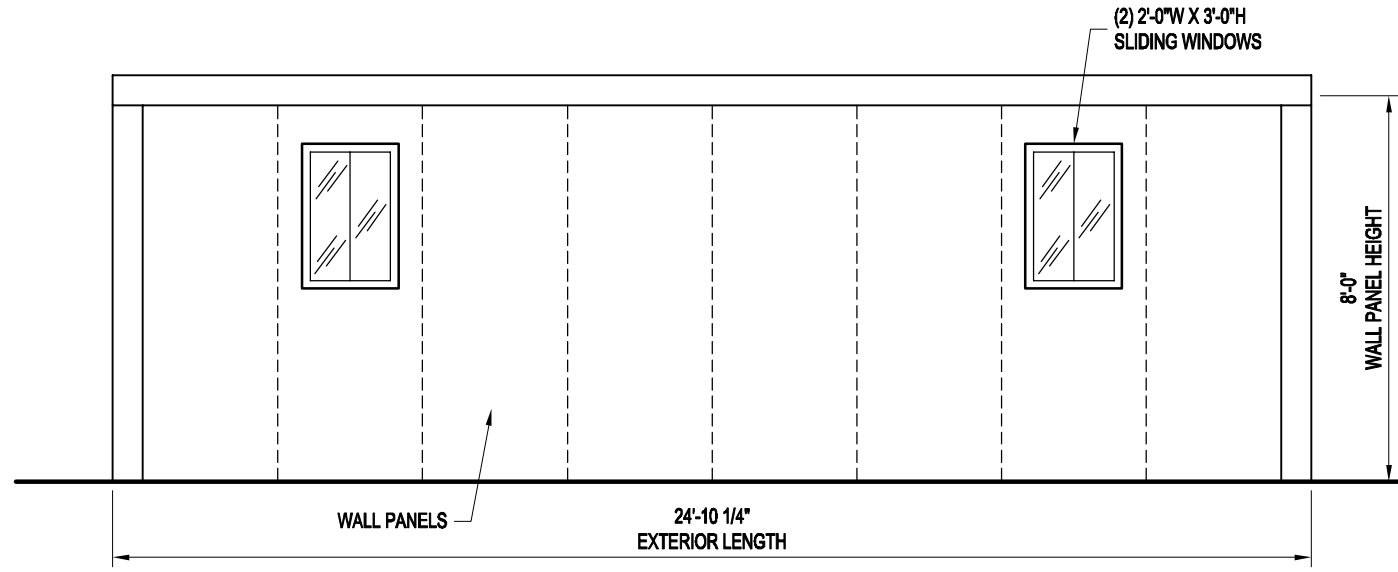
BLOCKING



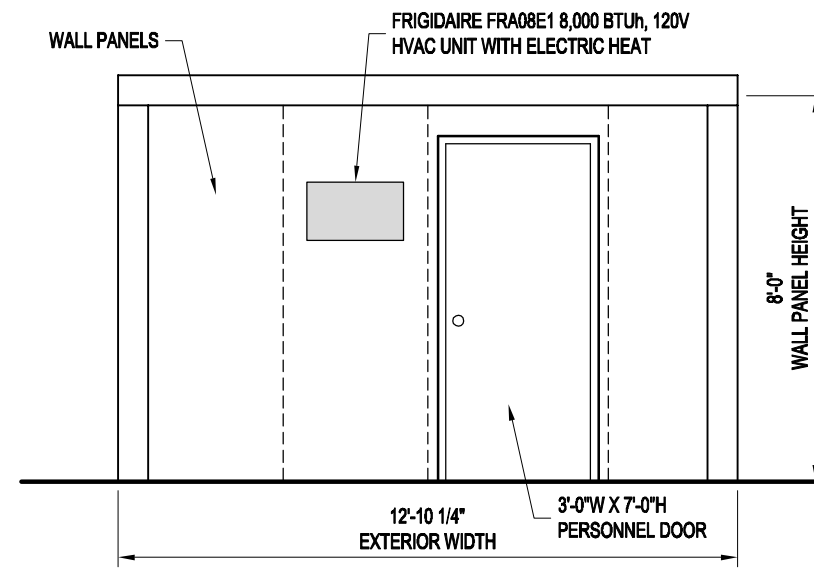
Mfr. by Kelly Group, Inc.
P.O. Box 1058
Fremont, NE 68026
Phone: 800-228-7230
Fax: 402-727-1363
Web: www.kellyklosure.com

PANEL & PANEL RACK HANDLING TIPS
SHEET 1 OF 9
PROPRIETARY INFORMATION
THIS DRAWING AND THE DESIGN COVERS ARE THE EXCLUSIVE PROPERTY OF KELLY GROUP, INC. NO REPRODUCTION, COPIES, LOANS, REPRINTS, CHANGES OR OTHERWISE USED EXCEPT IN THE LIMITED MANNER AUTHORIZED BY KELLY GROUP, INC. WITHOUT WRITTEN PERMISSION OF KELLY GROUP, INC.

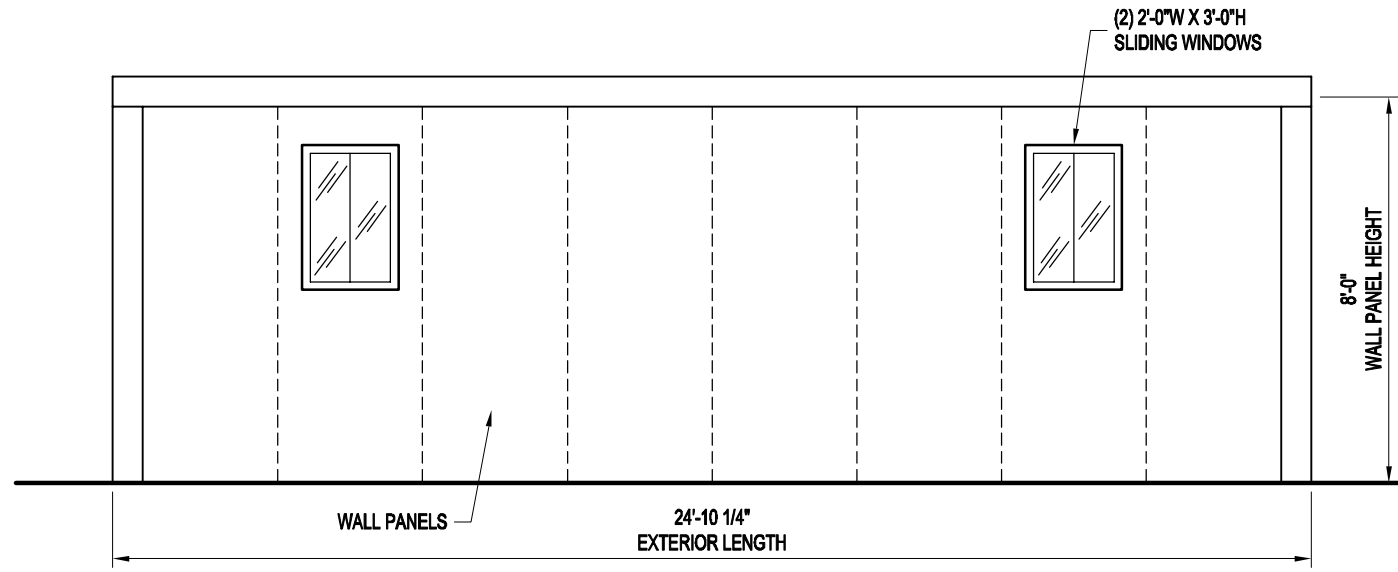
PROJECT TITLE: SAMPLE ASSEMBLY DRAWINGS
DRAWN BY: APC
DATE: 3/24/14
APPROVED BY:
DATE: 3/24/14
REVISION: 00
SCALE: NO SCALE
K.K. QUOTE NUMBER:
BUYER P.O. NUMBER:
BUYER:
K.K. ORDER NUMBER:



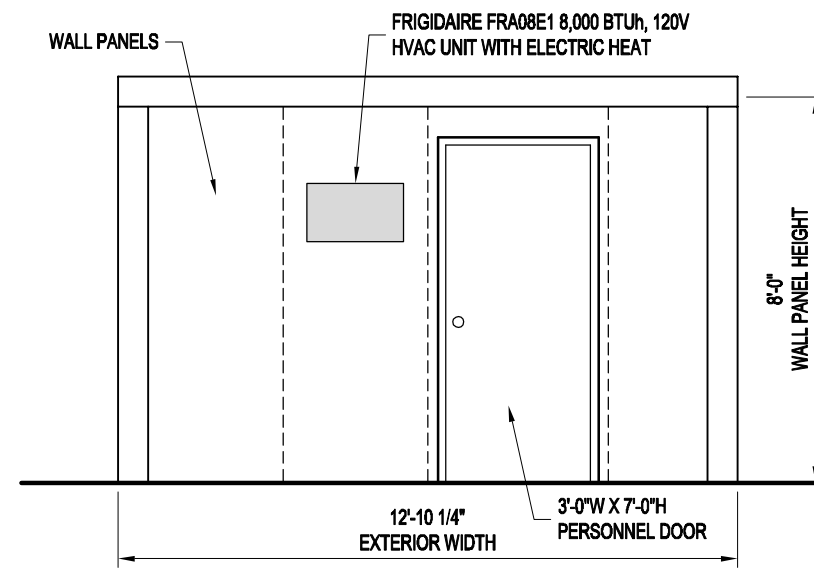
LEFT ELEVATION



FRONT ELEVATION



RIGHT ELEVATION



BACK ELEVATION



Mfr. by Kelly Group, Inc.
 P.O. Box 1058
 Fremont, NE 68026
 Phone: 800-228-7230
 Fax: 402-727-1363
 Web: www.kellyklosure.com

PAGE TITLE: ELEVATIONS
 SHEET 2 OF 9
PROPRIETARY INFORMATION
 THE DRAWINGS AND DESIGN COVERS ARE THE EXCLUSIVE PROPERTY OF KELLY GROUP, INC. NO PART OF THIS DRAWING OR DESIGN COVERS MAY BE REPRODUCED, COPIED, LOANED, EXAMINED, CHANGED OR OTHERWISE USED EXCEPT IN THE LIMITED MANNER AUTHORIZED BY KELLY GROUP, INC. WITHOUT THE WRITTEN PERMISSION OF KELLY GROUP, INC.

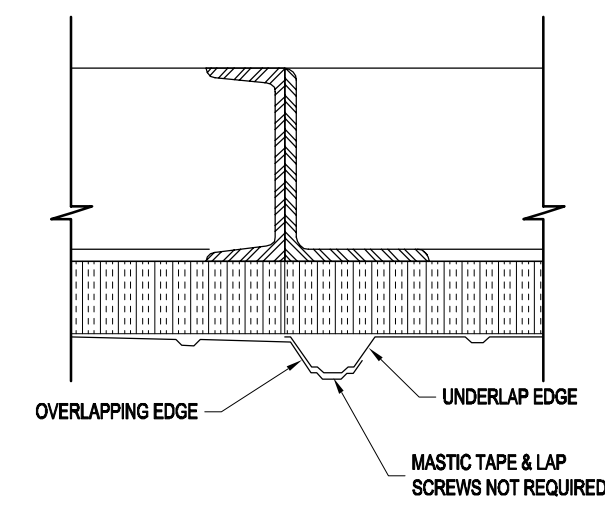
PROJECT TITLE: SAMPLE ASSEMBLY DRAWINGS		BUYER P.O. NUMBER:	
DRAWN BY: APC	DATE: 3/24/14	BUYER:	K.K. ORDER NUMBER:
APPROVED BY:	REVISION: 00	SCALE: 1/4" = 1'-0"	K.K. QUOTE NUMBER:
DATE: 3/24/14			

MATERIALS LIST

Qty	Description	
8	FR3122	Flat Roof Panel 3'x12'x2"
RP-1	29G	29Ga Galv Sht 2" Insul. 28Ga. Galv. Liner
14	3082	Wall Panel 3'x8'x2"
WP-1	29G	29Ga Galv Sht 2" Insul. 28Ga. Galv. Liner
2	2308	Wall Panel 2'-3" x8'x2"
WP-2	29G	29Ga Galv Sht 2" Insul. 28Ga. Galv. Liner
2	3908	Door Panel 3'-9" x8'x2" 3'x7' P. Door (HRSO)
WP-3	29G	29Ga Galv Sht 2" Insul. 28Ga. Galv. Liner
4	3909	Wall Panel 3'x8'x2" 2'x3' Sliding Window
WP-4	29G	29Ga Galv Sht 2" Insul. 28Ga. Galv. Liner
2	3910	Wall Panel 3'x8'x2" A/C Frameout
WP-5	29G	29Ga Galv Sht 2" Insul. 28Ga. Galv. Liner
2	2129	11'-11.5/8" Erection Angle
	A15	L1.1/2x1.1/2x1/8
4	2089	7'-11.5/8" Erection Angle
	A15	L1.1/2x1.1/2x1/8
16	2039	2'-11.7/8 Flat Roof Erection Angle
	A15	L1.1/2x1.1/2x1/8
1		Frigidaire FRA08E1
1		Set Assembly Drawings (w/MSDS Sheets)
1	Pint	Touch Up Paint - Panel Frames Red Primer
1	Pint	Touch Up Paint - Door Mfg. Door Gray
2		S. Parker Door Knob
2		S. Parker Door Closer
20		Outer Closure Strip Imperial Rib
75	ft	Batt Insulation
3	Rolls	1/2" x 1.1/2" Adhesive Base Seal - 25Ft
2	Tubes	Caulking - Clear Latex
Building Bolts		
350		3/8" x1" Bolts, Zinc Plated
350		3/8" Nuts, Zinc Plated
50		3/8" x3" Hilti KH-EZ Screw Anchors
Building Flashing		
4	8'	Comer Caps Galvalume
10	10'-6"	Eave Flashing Galvalume
600		#14 x 7/8" T-1 Screw w/ Washer Galvanized

THIS MATERIALS LIST IS FOR EXAMPLE PURPOSES ONLY AND DOES NOT MATCH THE BUILDING SHOWN IN THESE ASSEMBLY DRAWINGS.

- 1) FOUNDATIONS
 - A) THIS BUILDING IS BEING PLACED ON AN EXISTING CONCRETE BASE SURFACE.
 - B) ANCHOR BOLTS
 - a) PRESETTING OF ANCHOR BOLTS IS NOT REQUIRED. ANCHOR BOLTS WILL BE INSTALLED AS THE BUILDING IS ERECTED. KELLY RECOMMENDS THE HILTI KH-EZ SCREW ANCHOR AS SHOWN ON THE BUILDING BASE SECTION ON THE BASE SECTIONS PAGE.
 - b) CONCRETE ANCHORS WILL BE SUPPLIED WITH THE BUILDING SHIPMENT.
- 2) PANEL COMPONENTS AND FINISHES
 - A) PANEL FRAMES & STRUCTURAL STEEL COMPONENTS
 - a) ONE COAT, CORROSION RESISTANT, WATER REDUCIBLE, ALKYD EMULSION PRIMER
 - B) EXTERIOR STEEL SIDING AND ROOFING
 - a) 29 GA. 3/4" RIBBED "IMPERIAL RIB", DOES NOT REQUIRE SEAL TAPE OR STITCH SCREWS AT OVERLAPS
 - b) SIDING AND ROOFING TO BE GALVALUME COATED WITH PRIMER AND SILICONE MODIFIED POLYESTER PAINT FINISH
 - C) FACTORY INSTALLED INSULATION
 - a) INSULATION TO BE RIGID, CLOSED CELL, POLYISOCYANURATE WITH FOIL FACING
 - b) WALLS: 2" THICK (R-13)
 - c) ROOF: 2" THICK (R-13)
 - D) FACTORY INSTALLED STEEL INSULATION LINER
 - a) 28 GA. GALVANIZED STEEL
 - b) INSTALLED IN WALLS AND ROOF
- 3) PERSONNEL AND EQUIPMENT DOORS
 - A) 3'W X 7'H PERSONNEL DOOR FACTORY INSTALLED IN A 3'-9" WIDE WALL PANEL, TYPE "A" SHOWN ON PLAN VIEW
 - a) DOOR FRAME: 16 GA. STEEL, GALVANIZED (A-60), PRIMED AND FINISH PAINTED
 - b) DOOR LEAF: 18 GA. STEEL, HONEYCOMB CORE, GALVANIZED (A-60), PRIMED AND FINISH PAINTED
 - c) *ENTRY LOCK: STANDARD LOCKSET, S.PARKER B9160 SERIES, STAINLESS STEEL
 - d) HINGES: (3) 4.5" BALL BEARING, STANLEY FBB179, US26D FINISH
 - e) *CLOSER: STANDARD, S.PARKER 954, ALUMINUM FINISH
 - f) DOOR SWEEP: STANDARD, MD DCV134, ALUMINUM FINISH
 - g) WEATHER STRIPPING: NONE
 - h) THRESHOLD: MANUFACTURER STANDARD 3/16" FORMED STEEL
 1. (*) THESE ITEMS ARE FIELD INSTALLED TO PREVENT DAMAGE DURING SHIPMENT AND ERECTION



Mfr. by Kelly Group, Inc.
 P.O. Box 1058
 Fremont, NE 68026
 Phone: 800-228-7230
 Fax: 402-727-1363
 Web: www.kellyklosure.com

MATERIALS LIST

PAGE TITLE:

SHEET 3 OF 9

PROPRIETARY INFORMATION

THE DRAWINGS AND SPECIFICATIONS ARE THE EXCLUSIVE PROPERTY OF KELLY GROUP, INC. NO PART OF THIS DOCUMENT IS TO BE REPRODUCED, COPIED, LOANED, EXAMINED, CHANGED OR OTHERWISE USED EXCEPT IN THE LIMITED MANNER AUTHORIZED BY KELLY GROUP, INC. WITHOUT THE WRITTEN PERMISSION OF KELLY GROUP, INC.

PROJECT TITLE: SAMPLE ASSEMBLY DRAWINGS

BUYER P.O. NUMBER:

BUYER:

K.K. ORDER NUMBER:

DRAWN BY: APC

DATE: 3/24/14

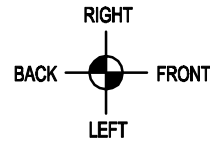
APPROVED BY:

REVISION: 00

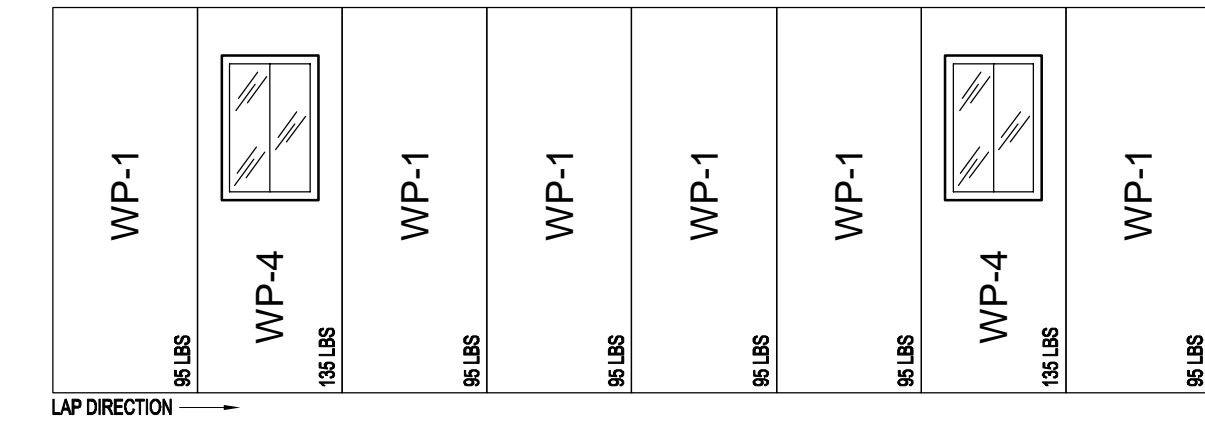
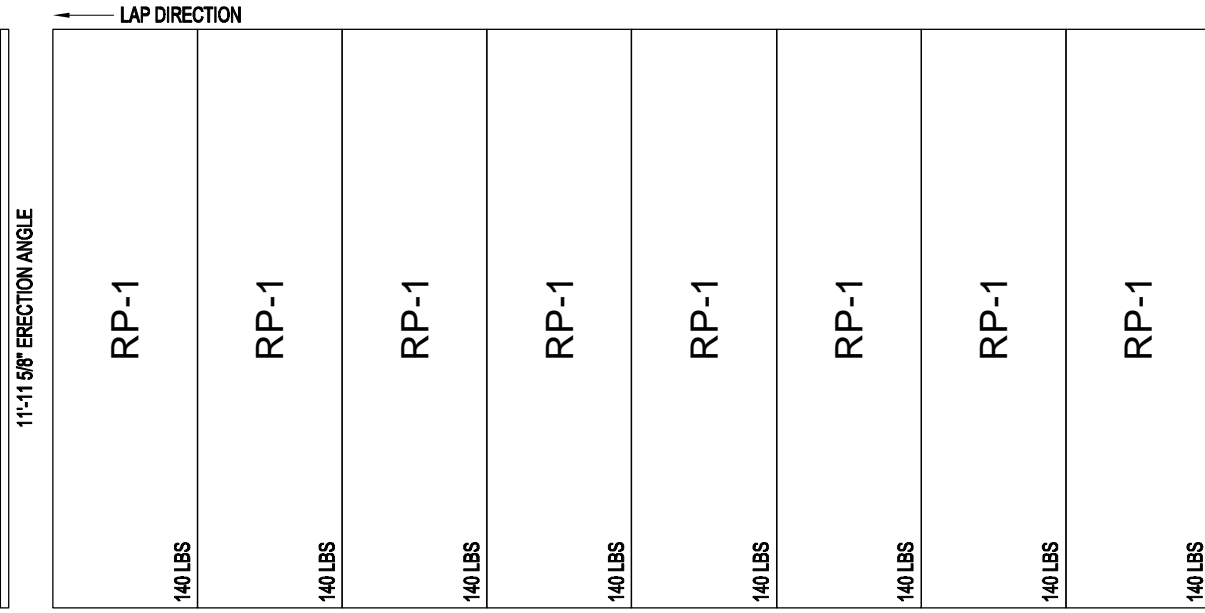
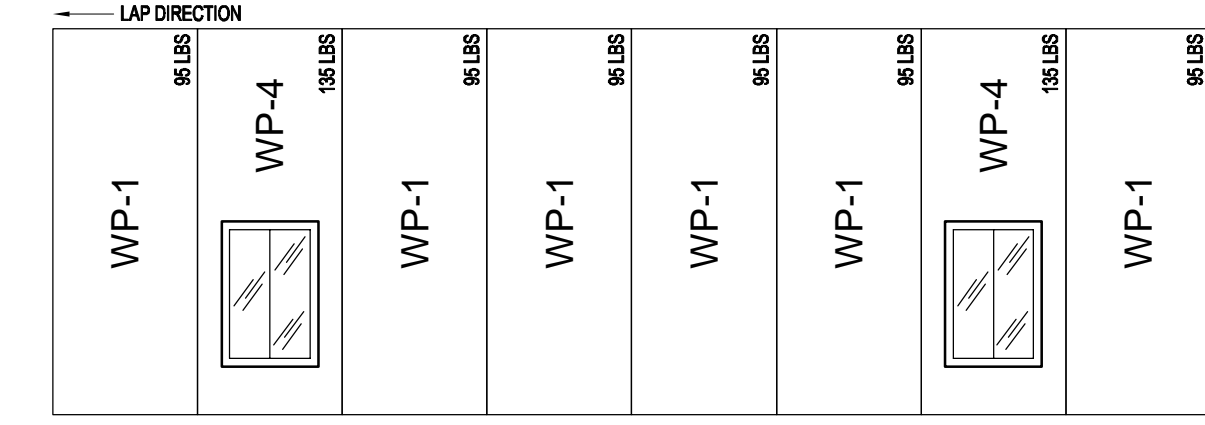
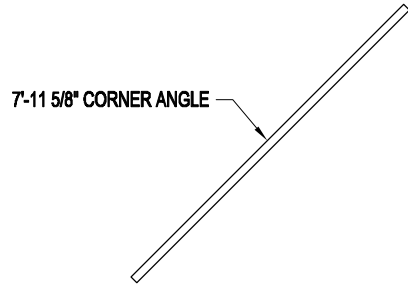
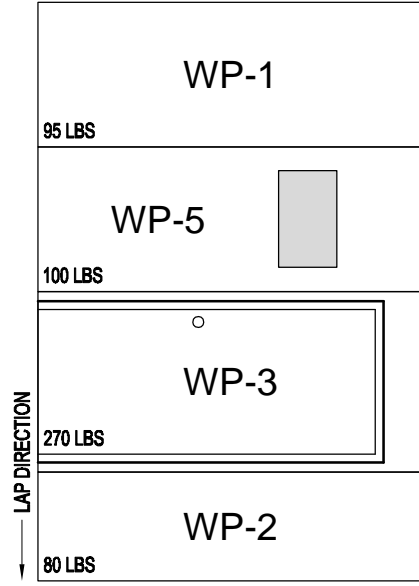
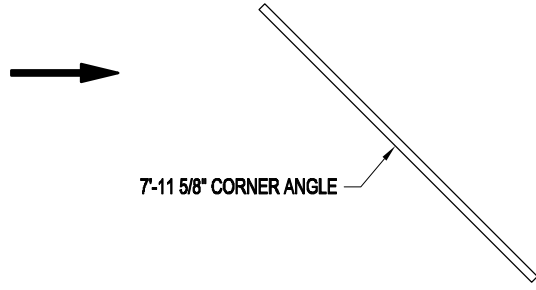
DATE: 3/24/14

SCALE: NO SCALE

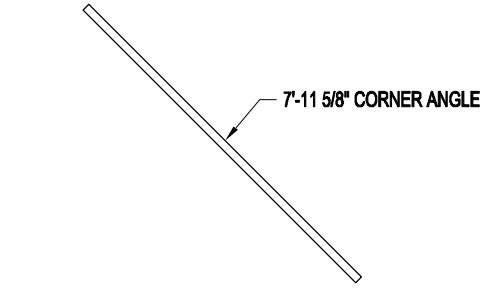
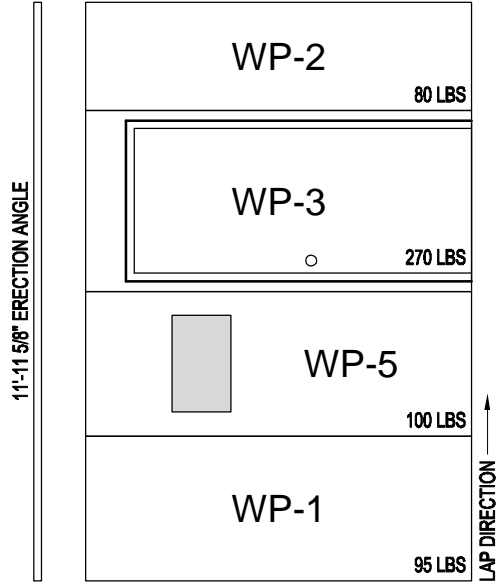
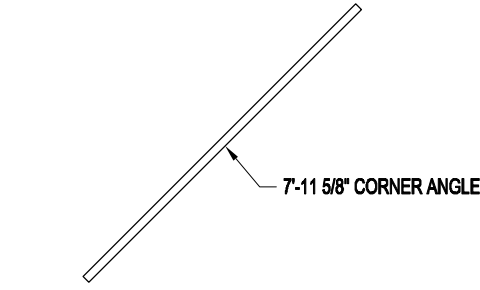
K.K. QUOTE NUMBER:



START ASSEMBLY AT THIS END & WORK IN THIS DIRECTION



BUILDING LAYFLAT

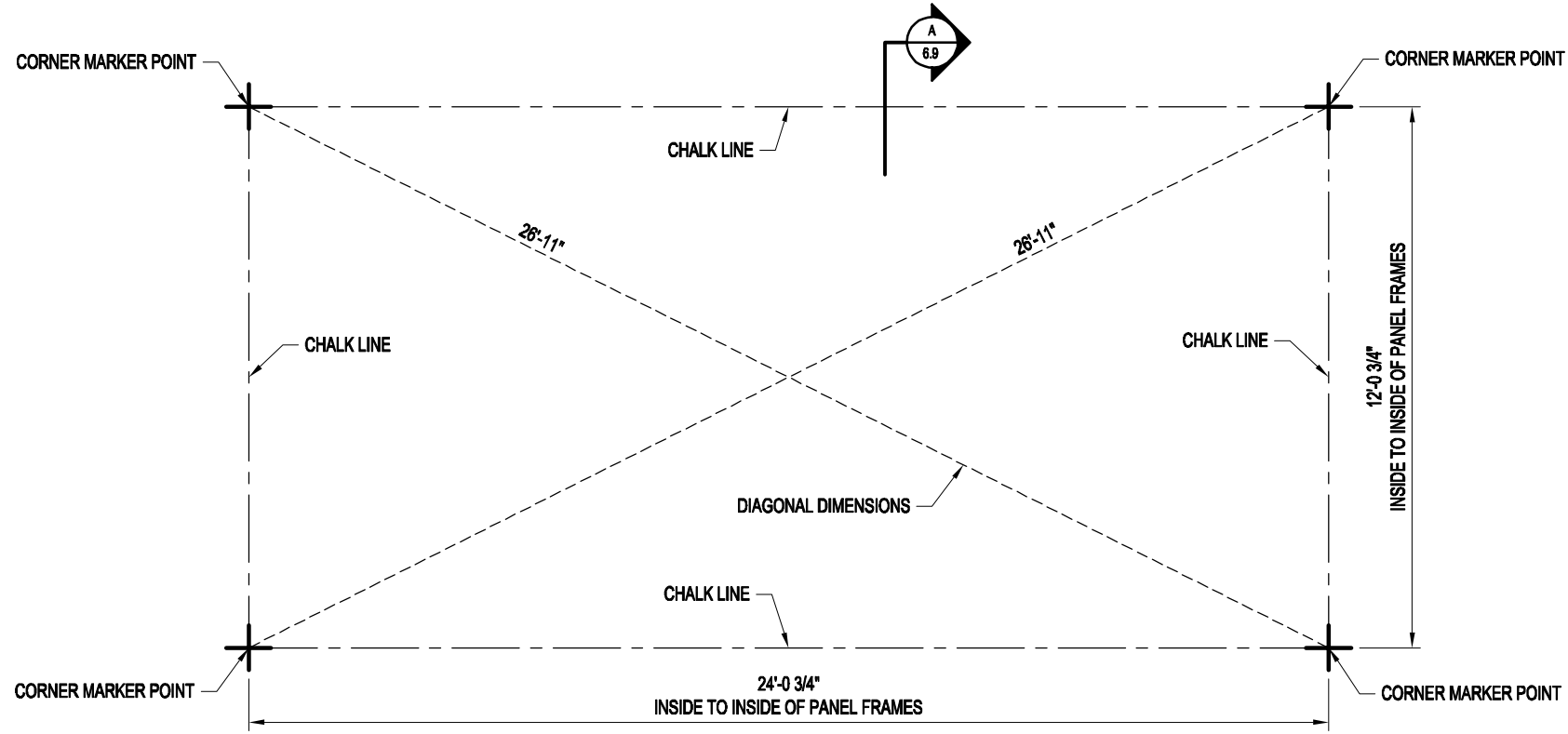
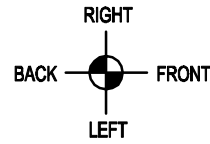


NOTES:

1. SEE CROSS-SECTION PAGE FOR BOLT LOCATIONS.
2. NOT ALL HOLES IN PANELS REQUIRE BOLTS.

DRAWN BY: APC	DATE: 3/24/14	APPROVED BY:	DATE: 3/24/14	REVISION: 00	SCALE: 1/4" = 1'-0"	K.K. QUOTE NUMBER:	BUYER P.O. NUMBER:
PROJECT TITLE: SAMPLE ASSEMBLY DRAWINGS		PAGE TITLE: BUILDING LAYFLAT		SHEET 4 OF 9		PROPRIETARY INFORMATION	
Mfr. by Kelly Group, Inc. P.O. Box 1058 Fremont, NE 68026 Phone: 800-228-7230 Fax: 402-727-1363 Web: www.kellyklosure.com		<small>THE DRAWINGS AND DESIGN COVERS ARE THE EXCLUSIVE PROPERTY OF KELLY GROUP, INC. NO PART OF THESE DRAWINGS OR DESIGN COVERS MAY BE REPRODUCED, COPIED, LOANED, EXHIBITED, CHANGED OR OTHERWISE USED EXCEPT IN THE LIMITED MANNER AUTHORIZED BY KELLY GROUP, INC. WITHOUT THE WRITTEN PERMISSION OF KELLY GROUP, INC.</small>					





FOUNDATION PREPARATION PLAN VIEW

STEP #1 - MARKER POINTS

USING THE DIMENSIONS AS SHOWN, MARK THE FOUR INSIDE BUILDING CORNER DIMENSIONS.

STEP #2 - DIAGONAL MEASUREMENT

MEASURE THE DIAGONALS (DIAGONAL MEASUREMENTS MUST BE EQUAL), CORRECT IF NECESSARY BY SHIFTING THE CORNERS WITHOUT CHANGING THE LENGTH OR WIDTH DIMENSIONS.

STEP #3 - CHALK LINE

USING THE SQUARED MARKER POINTS, SNAP A CHALK LINE AS SHOWN. (THE CHALK LINE SIGNIFIES THE INSIDE BUILDING DIMENSIONS)

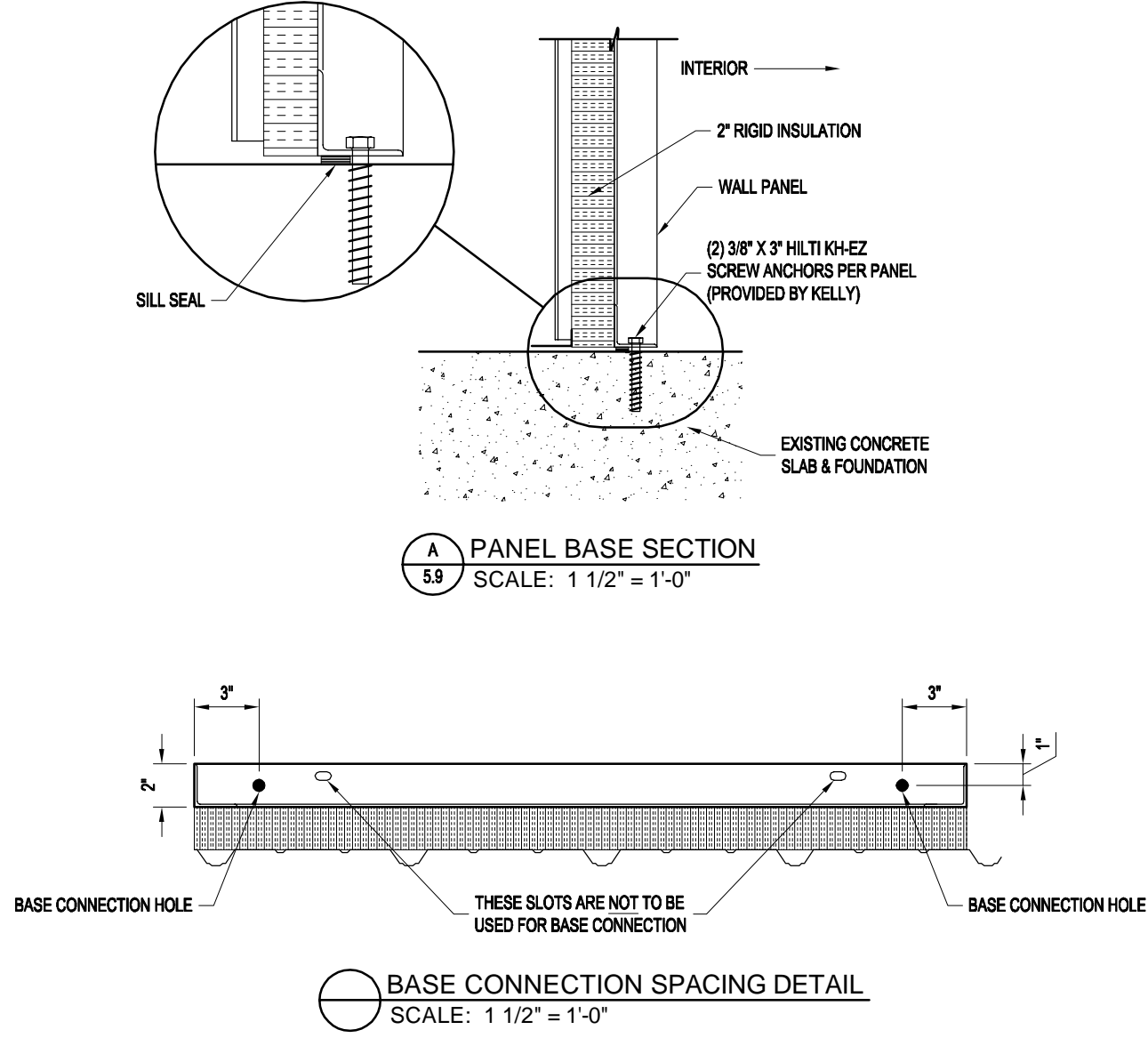
DRAWN BY: APC	DATE: 3/24/14	APPROVED BY:	REVISION: 00	DATE: 3/24/14	SCALE: 1/4" = 1'-0"	K.K. QUOTE NUMBER:
------------------	------------------	--------------	-----------------	------------------	------------------------	--------------------

PROJECT TITLE: SAMPLE ASSEMBLY DRAWINGS	BUYER:	K.K. ORDER NUMBER:	BUYER P.O. NUMBER:
---	--------	--------------------	--------------------

PAGE TITLE: FOUNDATION PREPARATION PLAN VIEW	SHEET 5 OF 9	PROPRIETARY INFORMATION <small>THE DRAWINGS AND DESIGN COVERS ARE THE EXCLUSIVE PROPERTY OF KELLY GROUP, INC. NO PART OF THIS DRAWING IS TO BE REPRODUCED, COPIED, LOANED, REPRODUCED, CHANGED OR OTHERWISE USED EXCEPT IN THE LIMITED MANNER AND FOR THE LIMITED PURPOSES AUTHORIZED BY KELLY GROUP, INC. WITHOUT THE WRITTEN PERMISSION OF KELLY GROUP, INC.</small>
--	---------------------	---

Mfg. by Kelly Group, Inc.
P.O. Box 1058
Fremont, NE 68026
Phone: 800-228-7230
Fax: 402-727-1363
Web: www.kellyklosure.com





DRAWN BY:
APC
DATE: 3/24/14
APPROVED BY:
DATE: 3/24/14
REVISION: 00
DATE: 3/24/14
SCALE: 1 1/2" = 1'-0"
K.K. QUOTE NUMBER:

PROJECT TITLE:
SAMPLE ASSEMBLY DRAWINGS

BUYER:
K.K. ORDER NUMBER:
BUYER P.O. NUMBER:

PAGE TITLE:

BASE SECTIONS

SHEET 6 OF 9

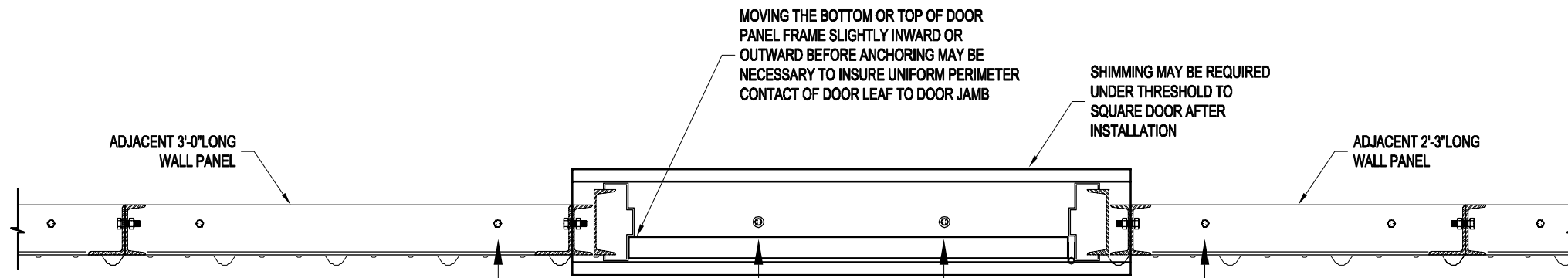
PROPRIETARY INFORMATION
THE DRAWINGS AND DESIGN COVERS ARE THE EXCLUSIVE PROPERTY OF KELLY GROUP, INC. ANY REPRODUCTION, COPIED, LOANED, EXHIBITED, CHANGED OR OTHERWISE USED EXCEPT IN THE LIMITED MANNER AUTHORIZED BY KELLY GROUP, INC. IS STRICTLY PROHIBITED. PENALTIES FOR VIOLATION WILL BE ENFORCED.

Mfr. by Kelly Group, Inc.
P.O. Box 1058
Fremont, NE 68026
Phone: 800-228-7230
Fax: 402-727-1363
Web: www.kellyklosure.com



ATTENTION INSTALLER:

DOOR PANEL MUST BE POSITIONED AND ADJUSTED IN THE FIELD. DUE TO CONDITIONS OF THE FOUNDATION / FLOOR, WE HAVE NO CONTROL OVER PROPER ALIGNMENT OF DOOR PANEL.




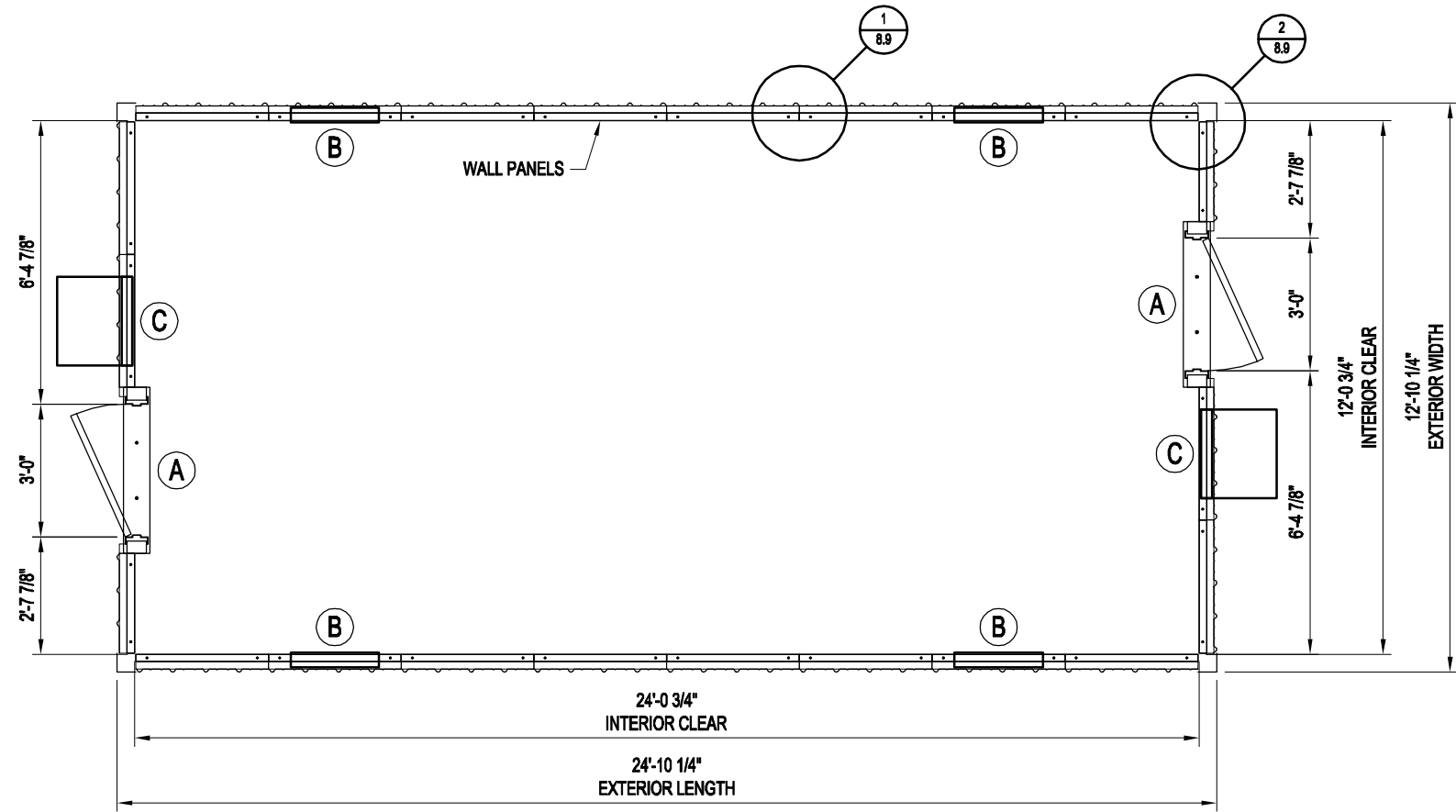
DURING BUILDING ASSEMBLY DO NOT INSTALL ANCHOR BOLTS AT THESE LOCATIONS UNTIL DOOR HAS BEEN PROPERLY ALIGNED. BEFORE DOOR PANEL IS TO BE ANCHORED, ASSEMBLE AND ERECT THE CORRESPONDING ROOF PANELS AND ACCESSORIES WITHIN THIS AREA. ANY INFIELD REPAIRS OR MODIFICATIONS DONE BY THE INSTALLER ARE THE SOLE RESPONSIBILITY OF THE INSTALLER.

FACTORY QUALITY CONTROL
DOORS ARE INSPECTED AT THE MANUFACTURING FACILITY FOR SQUARENESS AND PROPER DIMENSIONS BEFORE SHIPMENT. IF PRODUCT DAMAGE IS INCURRED DURING SHIPMENT, THIS DAMAGE MUST BE NOTED ON THE RECEIVING NOTICE AT THE TIME OF OFF LOADING AT THE BUILDING SITE. THE MANUFACTURER MUST BE NOTIFIED OF SUCH DAMAGE IMMEDIATELY.

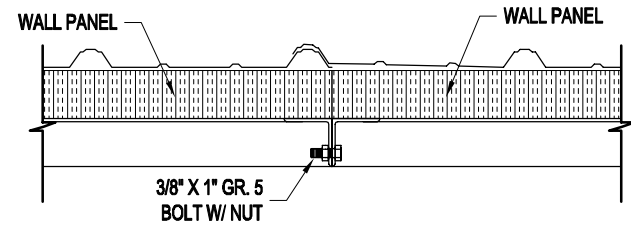
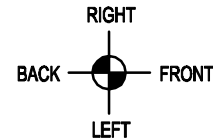
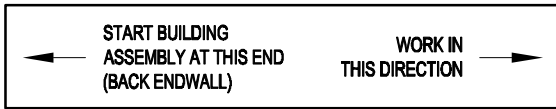
IMPORTANT NOTE:
OVERHEAD DOORS ARE SUPPLIED ONLY!
INSTALLATION & SERVICE BY OTHERS!
(INSTRUCTIONS FOR OVERHEAD DOOR ARE INCLUDED WITH THE DOOR)

FOR FACTORY ASSISTANCE IN DOOR ALIGNMENT CALL 800-228-7230

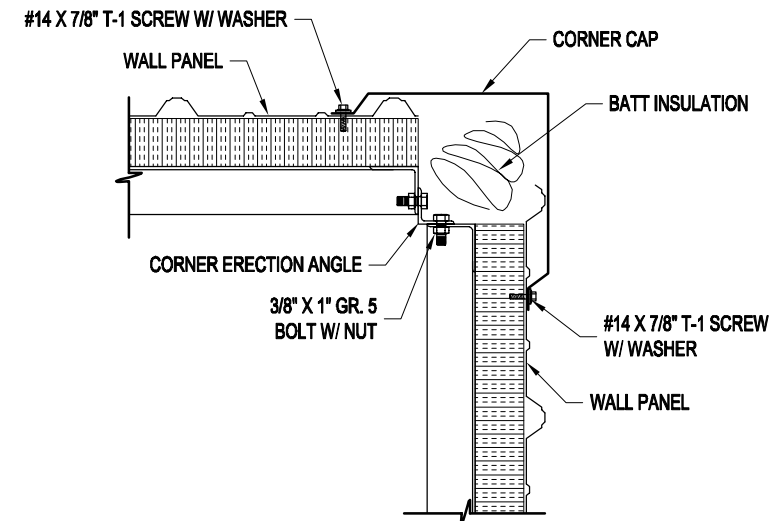
 <p>Kelly Klosure TOUGH BY DESIGN. CUSTOM BY CHOICE.</p>	
<p>Mfr. by Kelly Group, Inc. P.O. Box 1058 Fremont, NE 68026 Phone: 800-228-7230 Fax: 402-727-1363 Web: www.kellyklosure.com</p>	
<p>PROJECT TITLE: SAMPLE ASSEMBLY DRAWINGS</p>	
<p>PAGE TITLE: DOOR INSTALLATION INSTRUCTIONS</p>	
<p>SHEET 7 OF 9</p>	
<p>PROPRIETARY INFORMATION <small>THE DRAWINGS AND DESIGN COVERS ARE THE EXCLUSIVE PROPERTY OF KELLY GROUP, INC. ANY REPRODUCTION, COPIED, LOANED, EXHIBITED, CHANGED OR OTHERWISE USED EXCEPT IN THE LIMITED MANNER AUTHORIZED BY KELLY GROUP, INC. IS STRICTLY PROHIBITED. KELLY GROUP, INC. WILL NOT BE RESPONSIBLE FOR DAMAGES OF ANY KIND.</small></p>	
<p>DRAWN BY: APC</p>	<p>DATE: 3/24/14</p>
<p>APPROVED BY:</p>	<p>DATE: 3/24/14</p>
<p>REVISION: 00</p>	<p>DATE: 3/24/14</p>
<p>SCALE: 1" = 1'-0"</p>	<p>BUYER P.O. NUMBER:</p>
<p>K.K. QUOTE NUMBER:</p>	<p>BUYER:</p>
<p>K.K. ORDER NUMBER:</p>	<p>BUYER P.O. NUMBER:</p>



PLAN VIEW



1 TYPICAL PANEL CONNECTION DETAIL
8.9 SCALE: 1 1/2" = 1'-0"



2 TYPICAL CORNER CONNECTION DETAIL
8.9 SCALE: 1 1/2" = 1'-0"

DOOR & WINDOW SCHEDULE	
MARK NO.	DESCRIPTION
(A)	3'-0"W X 7'-0"H PERSONNEL DOOR (SWING AS SHOWN ON PLAN VIEW)
(B)	2'-0"W X 3'-0"H SLIDING WINDOW
(C)	FRIGIDAIRE FRA08E1 8,000 BTUH, 120V HVAC UNIT WITH ELECTRIC HEAT



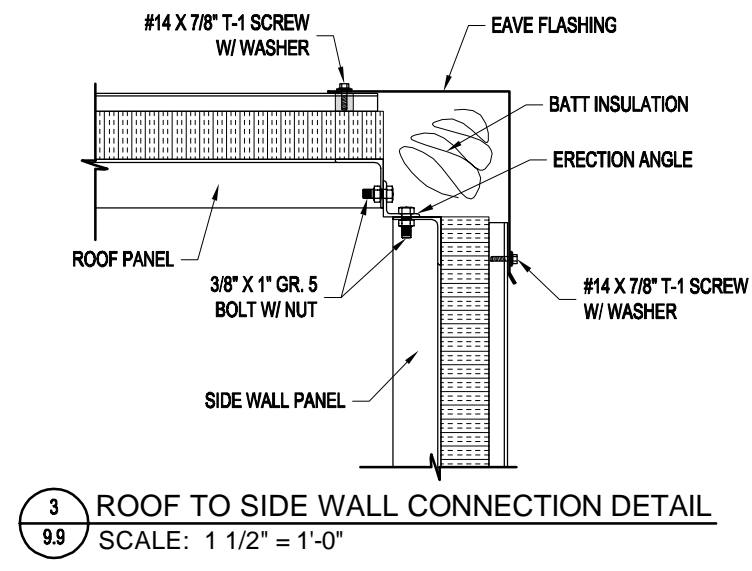
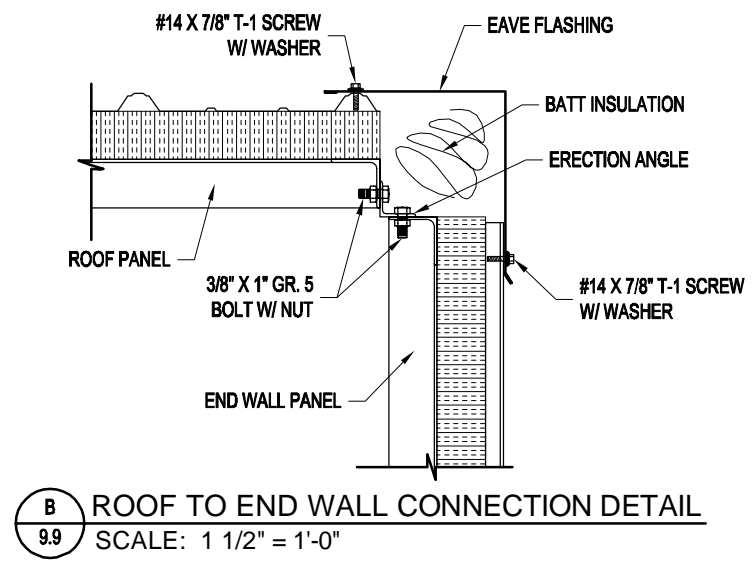
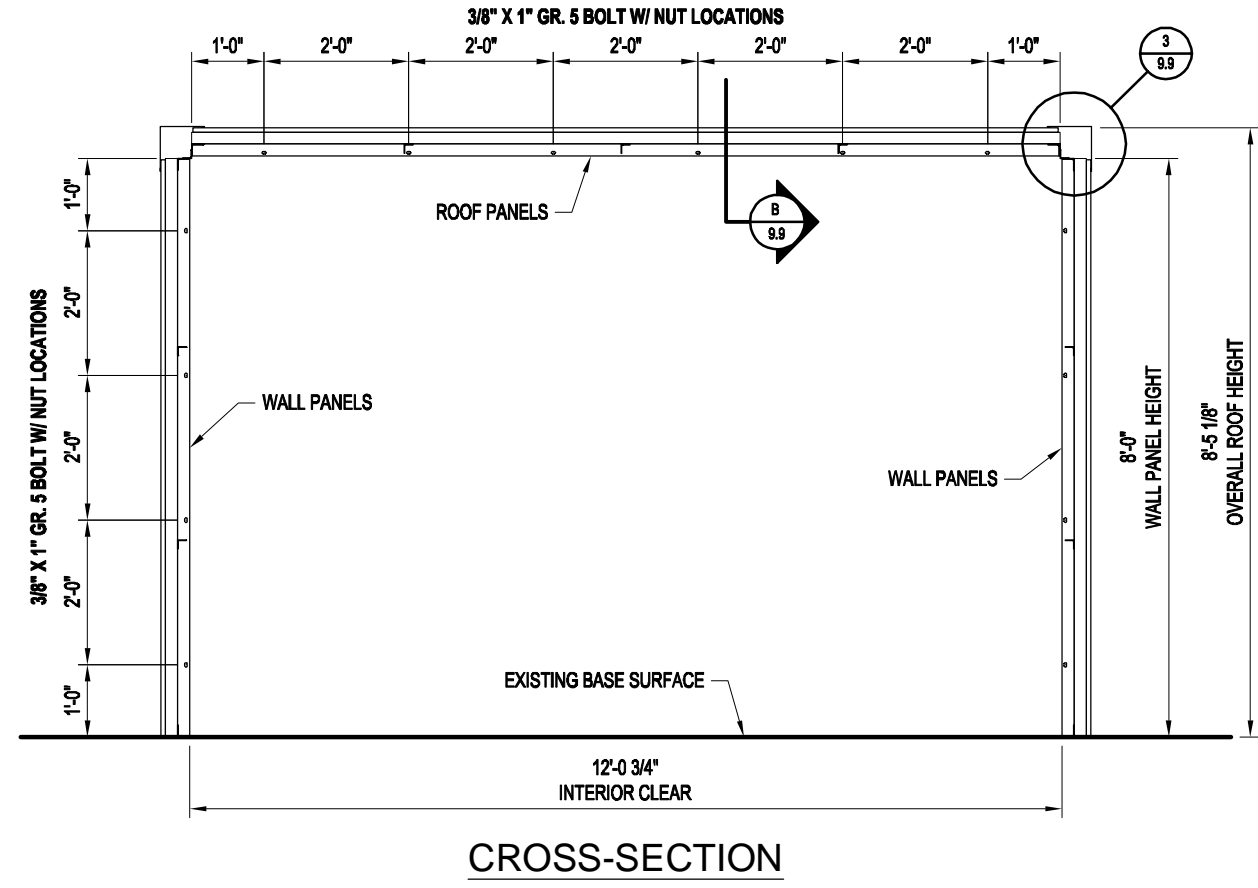
Mfr. by Kelly Group, Inc.
P.O. Box 1058
Fremont, NE 68026
Phone: 800-228-7230
Fax: 402-727-1363
Web: www.kellyklosure.com

PAGE TITLE: PLAN VIEW & DETAILS
SHEET 8 OF 9
PROJECT TITLE: SAMPLE ASSEMBLY DRAWINGS

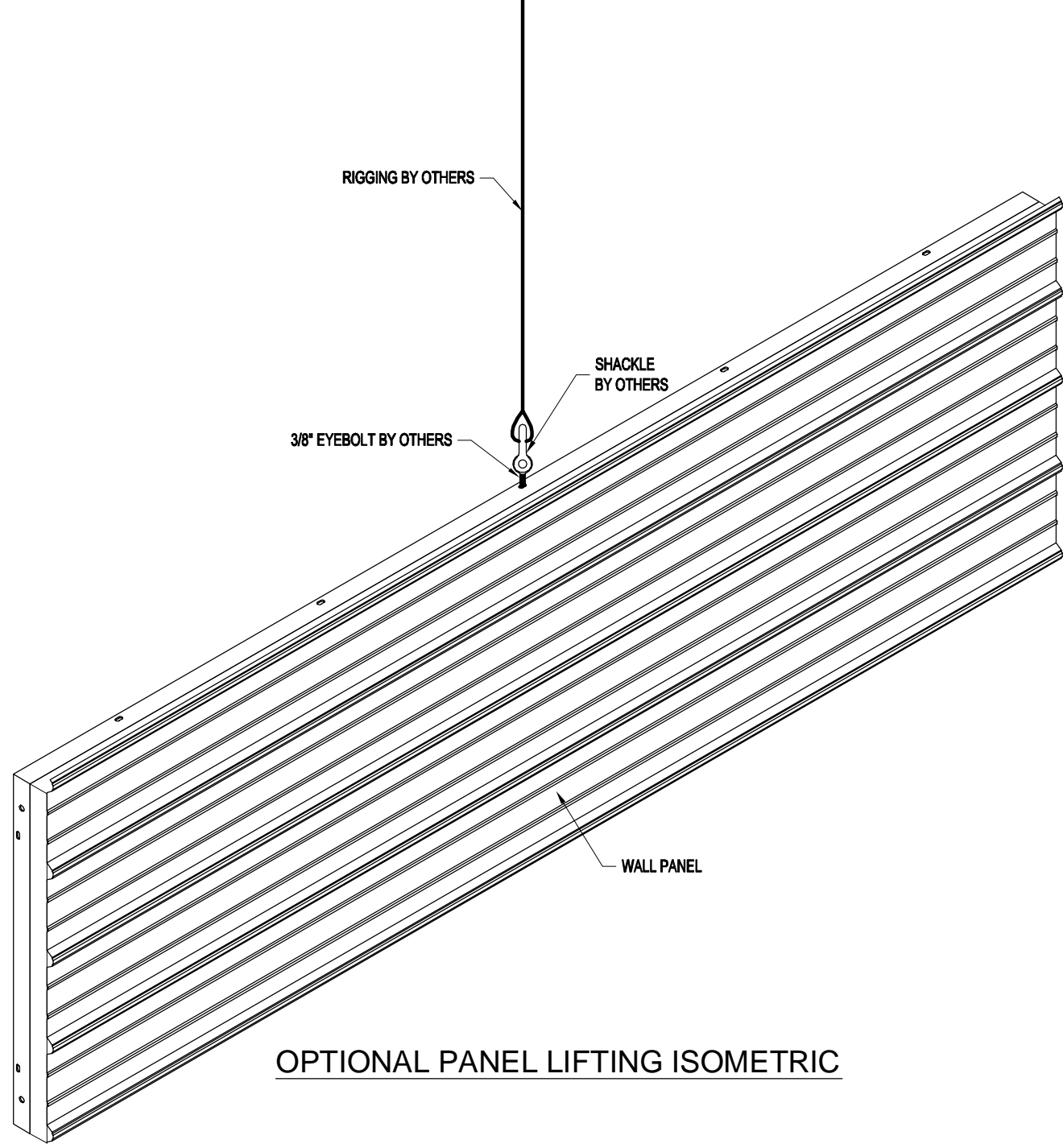
PROPRIETARY INFORMATION
THE DRAWINGS AND DESIGN ARE THE EXCLUSIVE PROPERTY OF KELLY GROUP, INC. NO PART OF THIS DRAWING IS TO BE REPRODUCED, COPIED, LOANED, EITHER WHOLLY OR OTHERWISE, WITHOUT THE WRITTEN PERMISSION OF KELLY GROUP, INC. ANY VIOLATION OF THIS PERMISSION SHALL BE SUBJECT TO LEGAL ACTION.

BUYER P.O. NUMBER:
BUYER:
K.K. ORDER NUMBER:
K.K. QUOTE NUMBER:

DRAWN BY: APC
DATE: 3/24/14
APPROVED BY:
REVISION: 00
DATE: 3/24/14
SCALE: 1/4" = 1'-0"



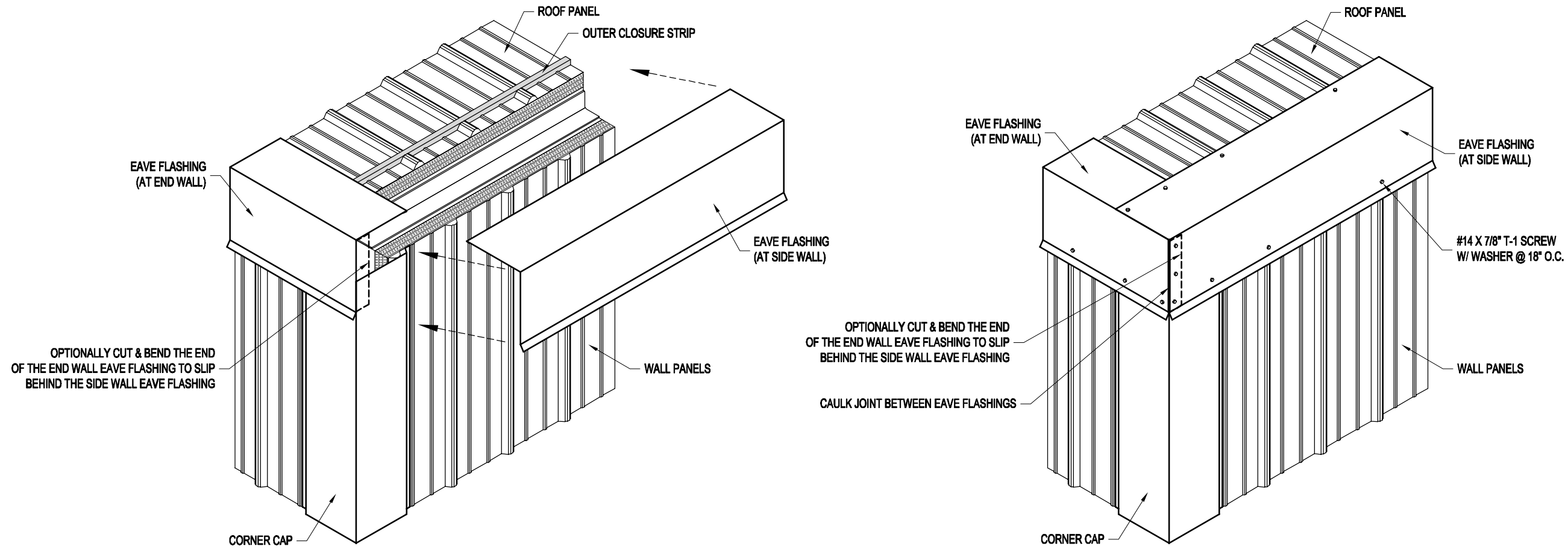
<p>Kelly Klosure TOUGH BY DESIGN. CUSTOM BY CHOICE.</p>	
<p>Mfr. by Kelly Group, Inc. P.O. Box 1058 Fremont, NE 68026 Phone: 800-228-7230 Fax: 402-727-1363 Web: www.kellyklosure.com</p>	
<p>PAGE TITLE: CROSS-SECTION</p>	<p>PROJECT TITLE: SAMPLE ASSEMBLY DRAWINGS</p>
<p>SHEET 9 OF 9</p>	<p>PROPRIETARY INFORMATION THE DRAWINGS AND DESIGN COVERS ARE THE EXCLUSIVE PROPERTY OF KELLY GROUP, INC. ANY REPRODUCTION, COPIED, LOANED, REPRODUCED, TRANSMITTED, CHANGED OR OTHERWISE USED EXCEPT IN THE LIMITED MANNER AUTHORIZED BY KELLY GROUP, INC. WILL BE AT THE USER'S SOLE RISK AND WITHOUT LIABILITY TO KELLY GROUP, INC.</p>
<p>DRAWN BY: APC</p>	<p>BUYER P.O. NUMBER:</p>
<p>DATE: 3/24/14</p>	<p>BUYER:</p>
<p>APPROVED BY:</p>	<p>K.K. ORDER NUMBER:</p>
<p>REVISION: 00</p>	<p>SCALE: 3/8" = 1'-0"</p>
<p>DATE: 3/24/14</p>	<p>K.K. QUOTE NUMBER:</p>



OPTIONAL PANEL LIFTING ISOMETRIC

DRAWN BY: APC DATE: 3/24/14 APPROVED BY: REVISION: 00 DATE: 3/24/14 SCALE: NO SCALE K.K. QUOTE NUMBER:	PROJECT TITLE: SAMPLE ASSEMBLY DRAWINGS		PAGE TITLE: OPTIONAL PANEL LIFTING ISOMETRIC		Mfr. by Kelly Group, Inc. P.O. Box 1058 Fremont, NE 68026 Phone: 800-228-7230 Fax: 402-727-1363 Web: www.kellyklosure.com
	BUYER: K.K. ORDER NUMBER: BUYER P.O. NUMBER:		SHEET SS-1 OF SS-3 <small>PROPRIETARY INFORMATION THE DRAWINGS AND DESIGN COVERS ARE THE EXCLUSIVE PROPERTY OF KELLY GROUP, INC. REPRODUCED, COPIED, LOANED, REPRODUCED, CHANGED OR OTHERWISE USED EXCEPT IN THE LIMITED MANNER AUTHORIZED BY KELLY GROUP, INC. WITHOUT THE WRITTEN PERMISSION OF KELLY GROUP, INC.</small>		





EAVE FLASHING INSTALLATION AT CORNER

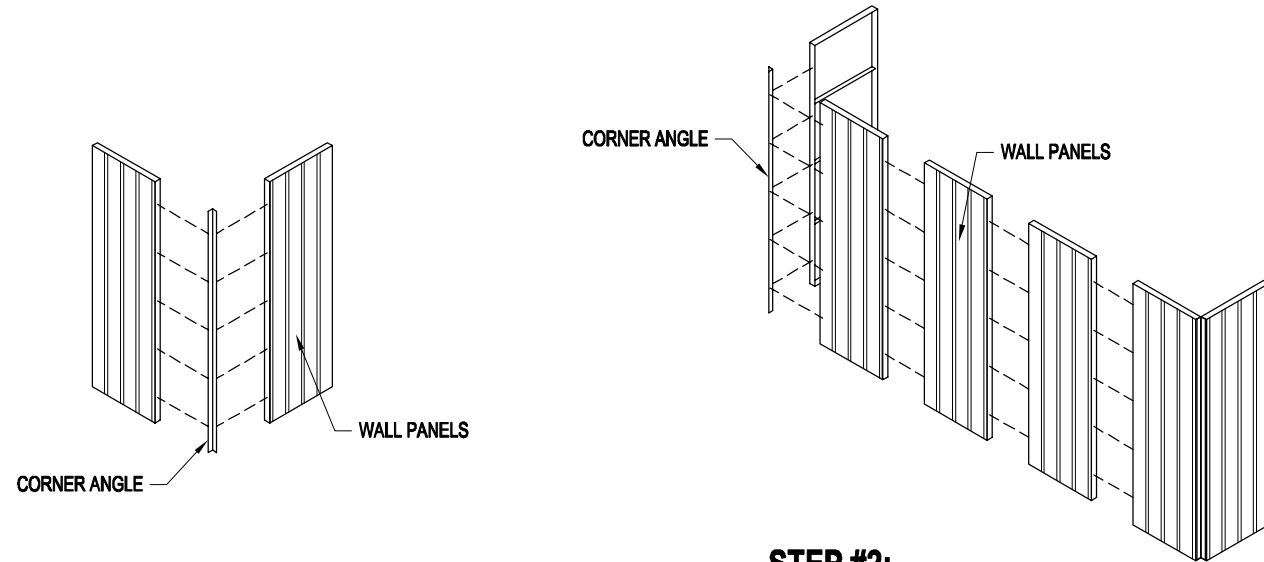


Mfr. by Kelly Group, Inc.
 P.O. Box 1058
 Fremont, NE 68026
 Phone: 800-228-7230
 Fax: 402-727-1363
 Web: www.kellyklosure.com

PAGE TITLE:
**EAVE FLASHING INSTALLATION
 AT BUILDING CORNER**
SHEET SS-2 OF SS-3
PROPRIETARY INFORMATION
 THE DRAWINGS AND DESIGN COVERS ARE THE EXCLUSIVE PROPERTY OF KELLY GROUP, INC. NO PART OF THIS DOCUMENT IS TO BE REPRODUCED, COPIED, LOANED, EXHIBITED, CHANGED OR OTHERWISE USED EXCEPT IN THE LIMITED MANNER AUTHORIZED BY KELLY GROUP, INC. WITHOUT THE WRITTEN PERMISSION OF KELLY GROUP, INC.

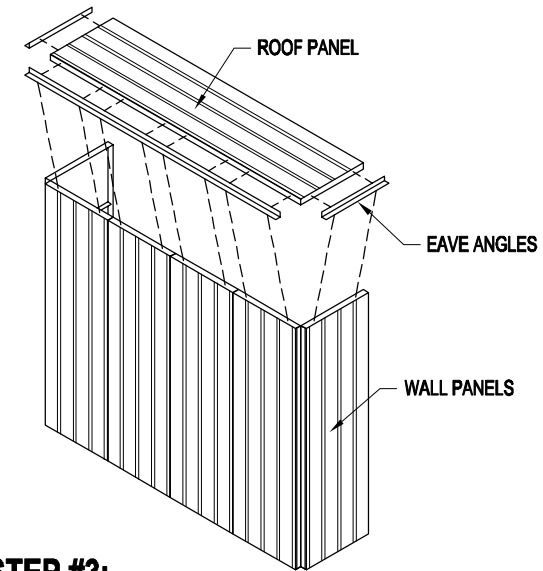
PROJECT TITLE: SAMPLE ASSEMBLY DRAWINGS		BUYER P.O. NUMBER:	
DRAWN BY: APC	DATE: 3/24/14	BUYER:	BUYER P.O. NUMBER:
APPROVED BY:	DATE:	K.K. ORDER NUMBER:	BUYER P.O. NUMBER:
REVISION: 00	DATE: 3/24/14	SCALE: NO SCALE	
K.K. QUOTE NUMBER:		BUYER P.O. NUMBER:	

ASSEMBLY SEQUENCE

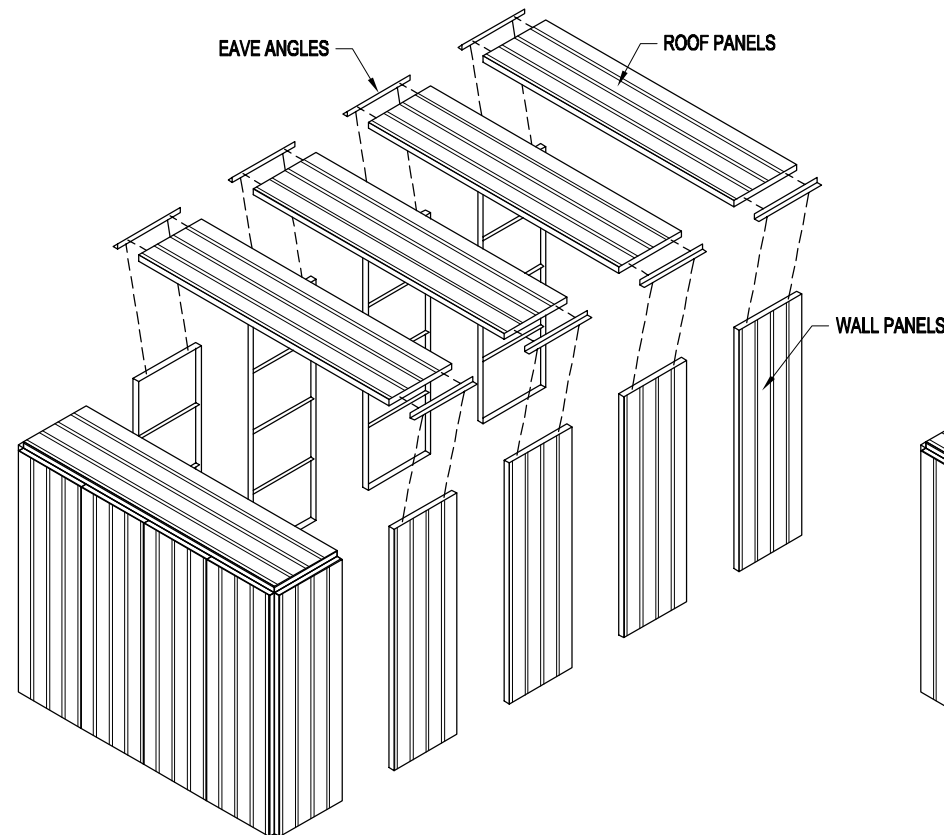


STEP #1:
ASSEMBLE THE FIRST CORNER OF THE BUILDING & ANCHOR IT DOWN.

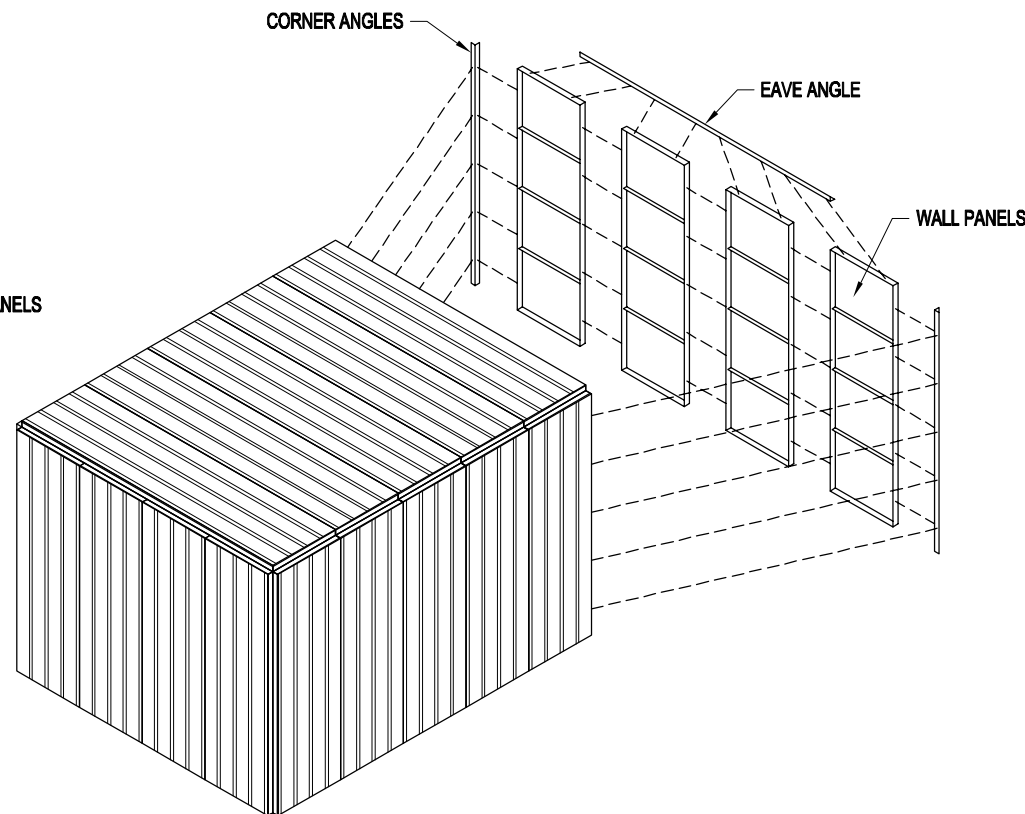
STEP #2:
ATTACH THE REST OF THE END WALL & THE FIRST PANEL OF THE OPPOSITE SIDE WALL. ANCHOR ALL PANELS AFTER THEY ARE IN PLACE.



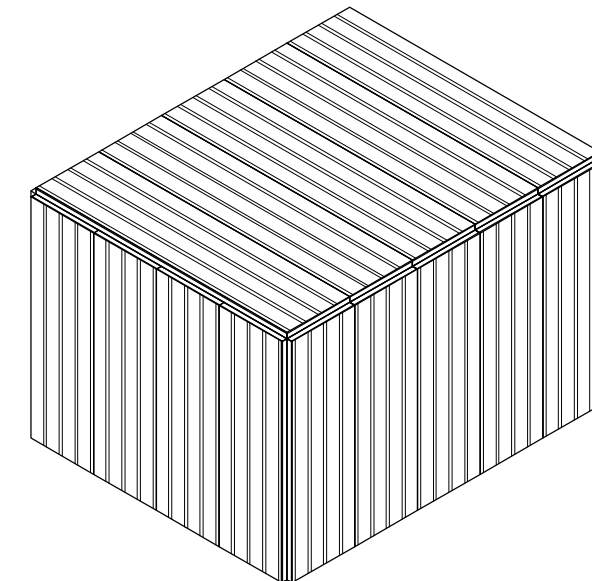
STEP #3:
ATTACH THE EAVE ANGLES TO THE FIRST ROOF PANEL, LIFT IT INTO PLACE, & ATTACH IT TO THE ASSEMBLED SECTION OF THE BUILDING.



STEP #4:
CONTINUE ASSEMBLING SIDE WALL & ROOF SECTIONS UNTIL SIDE WALLS & ROOF ARE COMPLETE. ANCHOR WALL PANELS AS THEY ARE ATTACHED TO THE ASSEMBLED BUILDING SECTION.



STEP #5:
ASSEMBLE THE FINAL END WALL & ANCHOR IT DOWN.



STEP #6:
AFTER ALL PANELS ARE IN PLACE, ALL FLASHING, DOOR HARDWARE, & OTHER ACCESSORIES CAN BE INSTALLED.



Mfr. by Kelly Group, Inc.
P.O. Box 1058
Fremont, NE 68026
Phone: 800-228-7230
Fax: 402-727-1363
Web: www.kellyklosure.com

PAGE TITLE: ASSEMBLY SEQUENCE
SHEET SS-3 OF SS-3
PROJECT TITLE: SAMPLE ASSEMBLY DRAWINGS

PROPRIETARY INFORMATION
THE DRAWINGS AND DESIGN ARE THE EXCLUSIVE PROPERTY OF KELLY GROUP, INC. NO PART OF THIS DRAWING IS TO BE REPRODUCED, COPIED, LOANED, EXHIBITED, CHANGED OR OTHERWISE USED WITHOUT THE WRITTEN PERMISSION OF KELLY GROUP, INC. ANY VIOLATION OF THIS WARNING IS SUBJECT TO PROSECUTION.

DRAWN BY: APC
DATE: 3/24/14
APPROVED BY:
DATE: 3/24/14
REVISION: 00
DATE: 3/24/14
SCALE: NO SCALE
K.K. QUOTE NUMBER:
BUYER:
K.K. ORDER NUMBER:
BUYER P.O. NUMBER: