

KELLY-BUILT **PRE-ASSEMBLED** **BUILDINGS**

Kelly
Klosure® 

TOUGH BY DESIGN. CUSTOM BY CHOICE.

Ready for immediate installation and use



800-228-7230 | www.kellyklosure.com

FROM ORDER TO INSTALLATION, WE DELIVER FASTER

Kelly Klosure's pre-assembled metal buildings are ready to use and perfect for small applications.

With more than 40 years of expertise, you can be confident that we thoughtfully engineer our enclosures to support equipment of all types in various environments, striking a balance between lightweight construction and heavy-duty performance.

Benefits:

- Fastest delivery on the market
- Pre-installed insulation (optional), windows and doors
- Quiet interior when insulated
- Rugged, long-lasting industrial design
- No blowouts – more durable than poly or fabric enclosures
- Reusable or permanent
- Pre-assembled for full operation in six hours
- Instant placement in the field – just plug it in
- No on-site assembly labor
- Cost-effective
- Range of size and color options



Applications include:

- Ammo Shelter
- Skid Enclosure
- Pipeline Monitoring Enclosure
- Pump House/Station
- Generator Enclosure
- On-Site Storage
- Boiler Enclosure
- Control Room

DELIVERED FULLY ASSEMBLED



1. Factory assembly



2. Delivery



3. Preparing to unload



4. Unloading

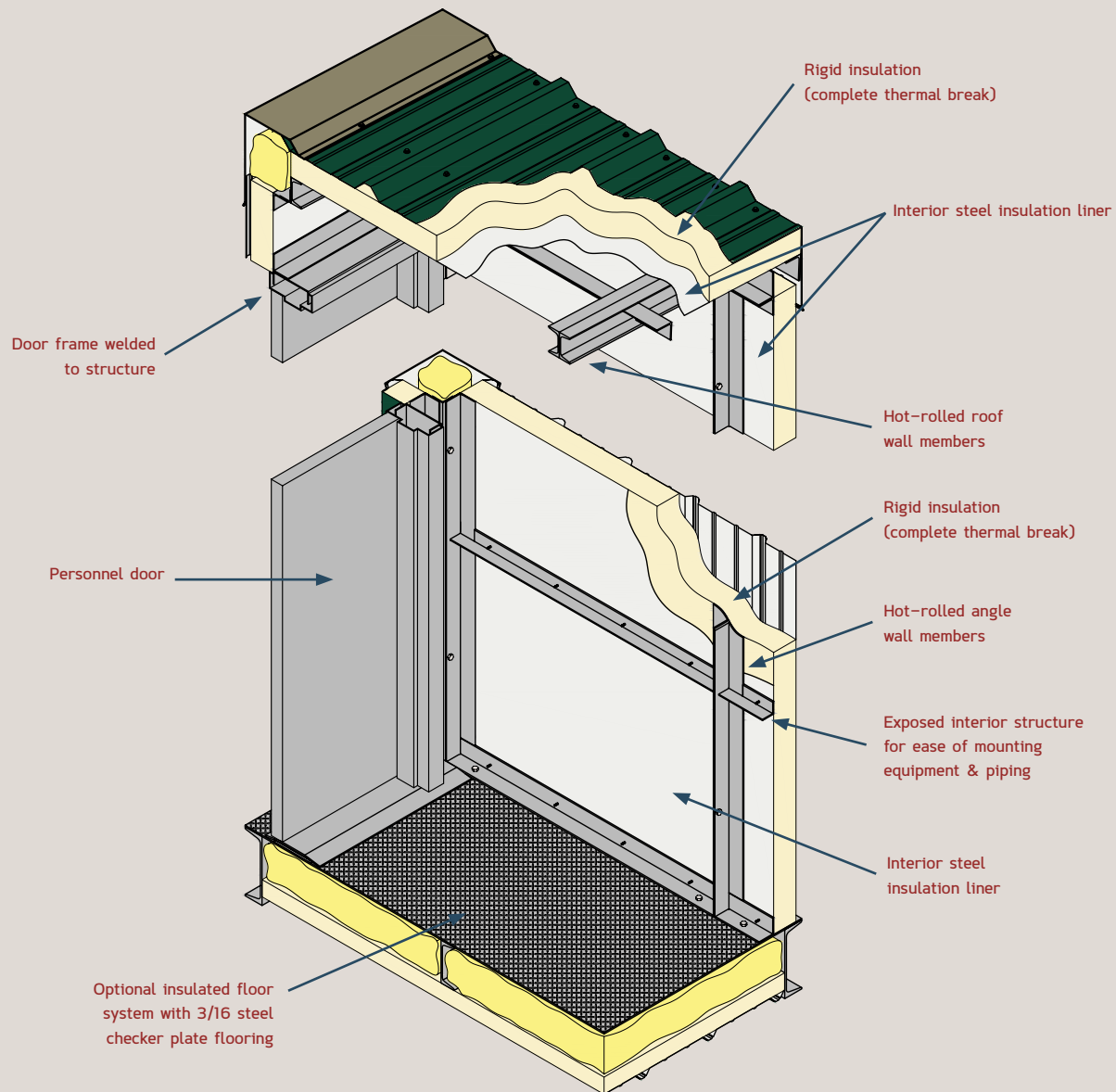


5. Drop in place



6. Finishing

DESIGNED FOR DURABILITY



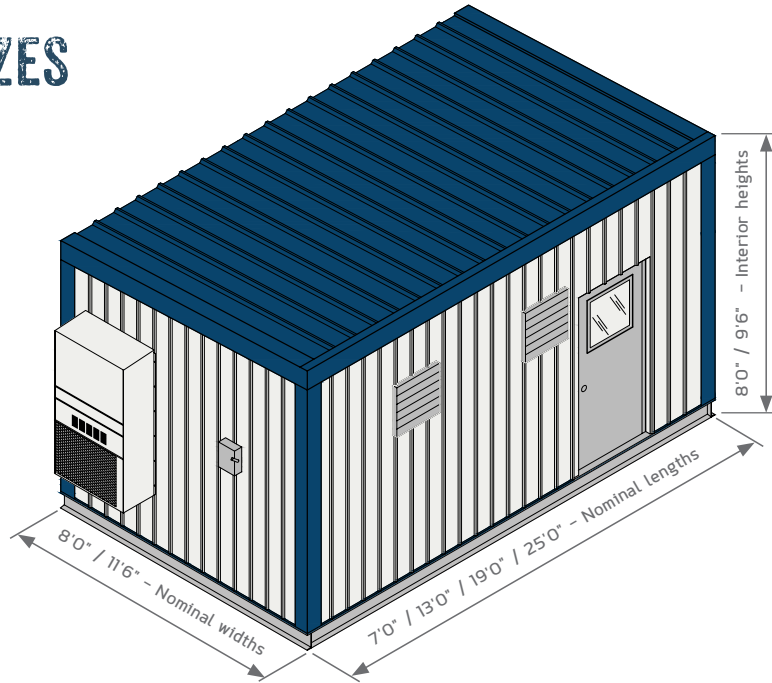
MINIMUM DESIGN PARAMETERS

Building Code: IBC 2012 / ASCE 7-10
Wind Load: 130mph (110mph - IBC 2009)
Roof Load: 60psf (Live+Dead)
Floor Load: 150psf (If floor system option selected)
Seismic: Design Category "C"
Risk Category: II (Occupancy Category II - IBC 2009)
(Higher design loads available upon request)

FEATURES

- Durable hot rolled steel framing with riveted galvanized sheeting or light-transmitting Thermal Lexan
- Reusable for multiple applications
- Factory assembled
- HVAC, doors and windows available per customer requirements

BUILDING SIZES



COMMON AVAILABLE OPTIONS

3'-0"W X 7'-0"H Personnel Door

Available Standard Options:

- 24" X 24" Window
- Variety of Door Hardware Options

5'-8"W X 7'-0"H Double Door

Available Standard Options:

- 24" X 24" Window
- Variety of Door Hardware Options

24"W X 24"H Louver

Available Standard Options:

- Damper (Motorized or Gravity)
- Exhaust Fan
- Custom Sizes

2'-0"W X 3'-0"H Sliding Window (White Vinyl)

Available Standard Options:

- Custom Slices
- Fixed Window
- Aluminum Frame

Bard Wall-Mounted HVAC Units

Available in Any Size/Configuration

Other Available Options Include:

- HVAC Frameouts
- Pipe Penetrations
- Cable Tray Penetrations
- Factory-Installed Electrical
- Roll-up Doors
- Floor System

(Other Options and Features Available Upon Request)





[Request a quote.](#)

Or get more info at kellyklosure.com
or 800-228-7230.



PO Box 1058 • 220 North H Fremont, NE 68026-1058 | kellyklosure.com | 800-228-7230



----- ★ ★ ★ -----
TOUGH BY DESIGN. CUSTOM BY CHOICE.
----- ★ ★ ★ -----